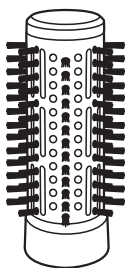
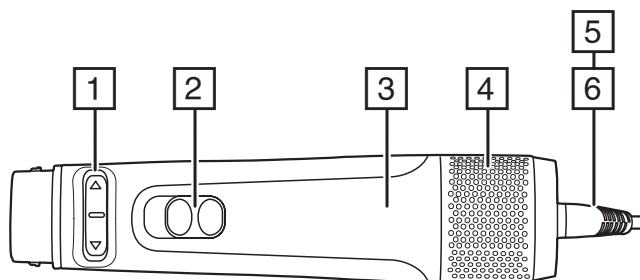


REMINGTON®

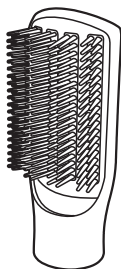
EST. NEW YORK 1937



Blow Dry & Style
Caring 1000W Rotating Airstyler
AS7580



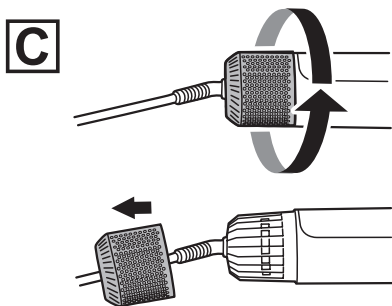
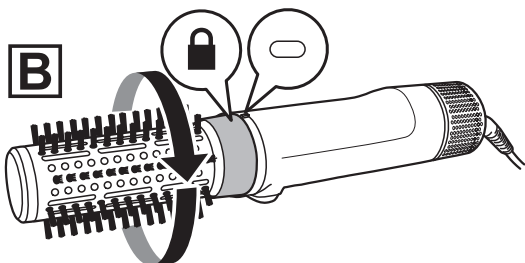
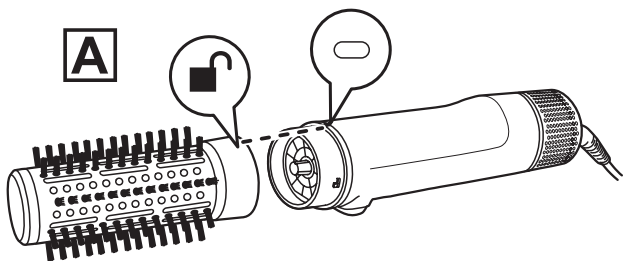
7



8




9



Thank you for buying your new Remington® product. Please read these instructions carefully and keep them safe. Remove all packaging before use.

WARNING: This appliance is hot. Keep out of reach of children at all times.

IMPORTANT SAFEGUARDS

- This appliance can be used by children aged from 8 years and above and persons with reduced physical, sensory or mental capabilities or lack of experience and knowledge if they have been supervised/instructed and understand the hazards involved. Children shall not play with the appliance. Cleaning and user maintenance shall not be done by children unless they are older than 8 and supervised. Keep the appliance and cable out of reach of children under 8 years.
 -  Do not use this appliance near bathtubs, showers, basins or other vessels containing water.
 - When the appliance is used in a bathroom, unplug it after use since the proximity of water presents a hazard even when the appliance is switched off.
 - For additional protection, the installation of a residual current device (RCD) having a rated residual operating current not exceeding 30 mA is advisable in the electrical circuit supplying the bathroom*.
- * Currently, the fitting in a bathroom of an electrical socket suitable or capable of operating the appliance is not permitted in the UK (see BS7671).
- If the supply cord of this unit becomes damaged, discontinue use immediately and return the appliance to your nearest authorised Remington® service dealer for repair or replacement in order to avoid a hazard.
 - Always ensure the voltage to be used corresponds to the voltage stated on the unit before plugging the appliance into the mains socket.
 - Keep direct airflow away from eyes or other sensitive areas.
 - Do not allow any part of the appliance touch the face, neck or scalp.

- During use, always ensure the inlet and outlet grilles are not blocked in any way as this will cause the unit to automatically stop. If this should occur, switch off and allow the unit to cool.
- Keep the power plug and cord away from heated surfaces.
- Do not leave the appliance unattended while plugged in.
- Do not place the appliance on any soft furnishings.
- Do not use attachments other than those we supply.
- Do not set the appliance down while still on.
- Do not twist or kink the cable, or wrap it round the appliance.
- Do not use the appliance if it is damaged or malfunctions.
- Check the cord regularly for any sign damage.
- This appliance is not intended for commercial or salon use.

PARTS

- | | |
|---|-----------------------------|
| 1. Rotation switch | 7. 40 mm soft bristle brush |
| 2. Speed/heat selector switch (※, ♪, ♫) | 8. Firm paddle brush |
| 3. 1000W power handle | 9. Pre-styling nozzle |
| 4. Removable inlet grille | Not shown: |
| 5. Swivel cord | • Protective cover |
| 6. hang up loop | |
-

INSTRUCTIONS FOR USE

Prepare the hair for styling

- Wash and condition the hair as normal.
- Squeeze out excess moisture with a towel and comb through.
- Using the pre-styling nozzle rough dry the length and roots until 80% dry.
- Divide the hair into sections, style the lower layers first.

To fit/remove attachments

Fit the attachment before you turn on the appliance.

CAUTION: Attachments can become hot during use, let them cool before removing.

- 1 To remove, twist the attachment until the markings line up as shown in figure A and pull it off the power handle.
- 2 To fit an attachment, align the symbols on the power handle and attachment as shown in figure B then twist the attachment until it locks into place.

Speed and temperature settings

- 1 Plug your styler in to the mains power supply.
- 2 Turn your air styler on and select the appropriate setting for your hair by sliding the speed/heat selector switch.
- 3 Your air styler has three settings:

- High heat/speed (H): Thick and difficult to style hair.
- Low heat/speed (L): Thin/fine, damaged or bleached hair.
- Cool (*): Helps to set your style with cool air.

Rotation settings

- Only the 40 mm brush rotates.
- To use the rotating function press the right arrow (▶) on the rotation switch to rotate the attachments clockwise and the left arrow (◀) to rotate the attachments anti clockwise.
- NOTE: The brush will only start rotating when a temperature setting has been selected.

Create volume and shape using the 40mm rotating brush

- To dry your roots and add volume, place the brush underneath the section close to the roots and hold for a few seconds, lifting the hair as you dry.
- Move the styler downwards through the hair section, at the same time rotate the brush away from the head by pressing and holding ◀ or ▶ as required.
- Keep moving the styler downwards to resist the brush rotation. Doing this will create tension through the section of hair.
- If the brush spins too quickly release the rotation switch and remove the brush from your hair.
- To create shape, continue rotating the brush until you reach the ends of the hair and then roll the ends under.
- For even more volume, wrap the bottom of the hair section around the brush. Press and hold the applicable rotation switch (◀ ▶) and wind the entire length of the section around the barrel, stopping at the roots. Release the rotation switch and hold the brush in the hair for a few seconds or until the section is dry.
- Repeat this around the head.
- Let the hair cool before styling.
- Place the protective cover over the brush head to protect the bristles from damage in storage.

Create smooth, sleek hair using the firm paddle brush

- Starting at the roots, slowly brush through each section just as you would with a normal brush.
- To add additional volume tip your head upside down and brush the underneath of your hair.
- When dry use your fingers to shape the hair and ends.

STORAGE, CLEANING AND MAINTENANCE

- After use, turn the appliance off by moving the temperature control switch to the **O** position.
- Unplug the appliance and allow to cool before cleaning and storing away.
- Wipe all surfaces with a damp cloth
- Don't use harsh or abrasive cleaning agents or solvents,
- To maintain peak product performance and to prolong motor life, it is important to regularly remove any dust and dirt from the inlet grille.
- Remove the grille as shown (fig. C), clean with a cloth or soft brush, then replace it.

RECYCLING



To avoid environmental and health problems due to hazardous substances, appliances and rechargeable and non-rechargeable batteries marked with one of these symbols must not be disposed of with unsorted municipal waste. Always dispose of electrical and electronic products and, where applicable, rechargeable and non-rechargeable batteries, at an appropriate official recycling/ collection point.